

Canon

Delighting You Always



CX-G240



CX-G640



INKJET COLOUR CARD PRINTERS

Designed to meet diverse needs and on-demand printing, Canon's colour card printers support small business owners and event managers by combining high-speed printing with exceptional sharpness and photo-realistic quality.



COMPACT
SIZE



HIGH QUALITY,
HIGH SPEED



SUITABLE FOR
SMALL OR LARGE
PRINT RUNS

Do not just outsource, take control of your printing today

Does your business need professional quality convention badges for workshops or internal events? Or how about employee badges and business cards? Do you face the challenge of high costs when printing in small quantities? Canon's card printers offer businesses an easy solution to achieve greater control and less hassle with quick changes and short turnaround times through on-demand printing, while ensuring print quality and cost efficiency by bringing printing in-house.

Reasons why you should take control of your printing needs:

Scalable printing volume

Print the exact quantity needed for any occasion to reduce cost and wastage with no requirement to comply with minimum order quantities.

Design and print everything yourself

You are in control of the entire process from design to print. This opens up the opportunity for you to try out new designs and have them printed with ease. At the same time, giving you the ability to customise prints for individual customers.

Eliminates long wait times from design to print

Printing in-house shortens the time it takes from design to print, ensuring maximum efficiency and minimal downtime. Cards can be printed on demand, making your inventory management less of a hassle.



- ✕ Paper
- ✕ Plastic Card
- ✕ Extra Thick Paper

Inkjet Colour Card Printers

The Canon CX-G2400 and CX-G6400 print business cards, ID cards, and visitor badges, ranging from high volume print jobs to occasional small event usage. The ultra-compact CX-G2400 is suitable for events and low visitor count deployment, while the CX-G6400 is designed for high volume printing, and also printing oversized badges for events, festivals and trade shows.



CX-G6400

Business Card
UP TO **100**
sheets/min

Postcard
UP TO **45**
sheets/min

Media Capacity
UP TO **500**
sheets (business card)

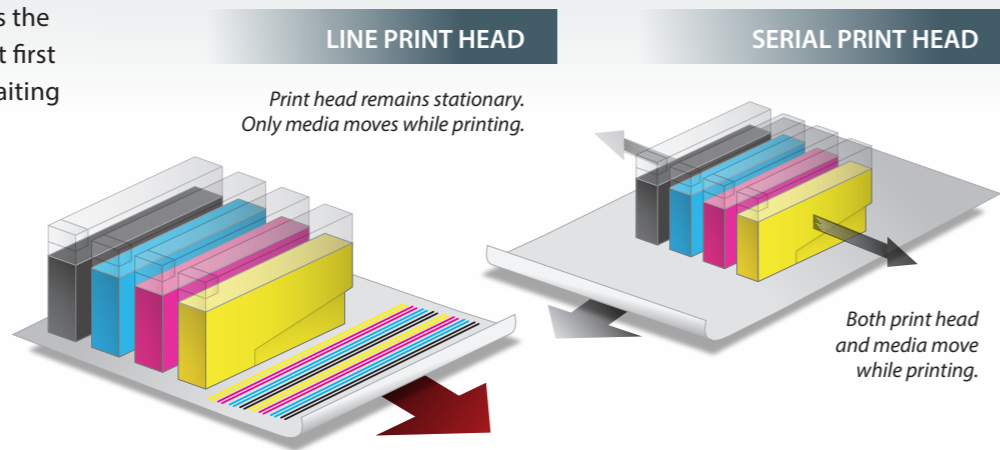
CX-G2400

Business Card
UP TO **50**
sheets/min

Media Capacity
UP TO **250**
sheets (business card)

LINE PRINT HEAD ENABLES HIGH PRINT SPEED

Line print head technology allows the printer to print at high speed. Fast first print out time also reduces the waiting time for on-demand printing.



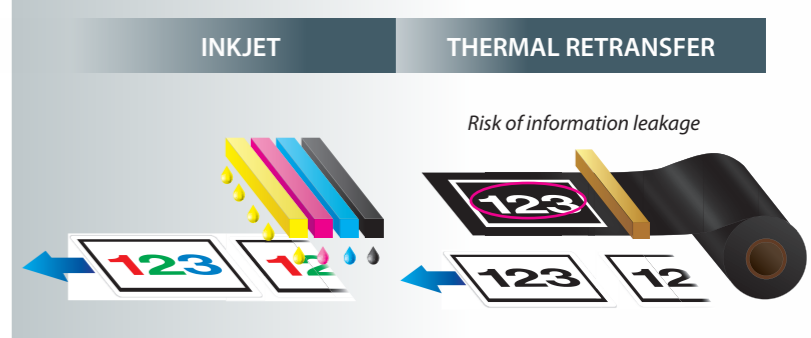
INDIVIDUAL INK CARTRIDGES REPLACEMENT

Individual ink cartridges are particularly effective for printing spot colours as they need to be replaced less frequently than thermal retransfer printers with ink ribbons.



PREVENT INFORMATION LEAKAGE

Unlike ink ribbons for thermal retransfer printing which leave traces of print data on the ribbon consumable, Inkjet printing leaves no data behind, reducing the risk of information leakage.



LARGE PAPER FEEDING CAPACITY

Large paper feeding capacity reduces the frequency and time required to replenish media during large print jobs.



SUPERIOR PRINT QUALITY

A high 1200 x 1200 dpi resolution delivers ultra-sharp text and image quality. Barcodes and QR codes can also be printed with high fidelity, ensuring accuracy of scans.



SUPPORTS WIDE RANGE OF MEDIA

Inkjet printing can handle a wide range of media, including matte-coated papers, glossy papers, card stock, and plastic cards*.

* Inkjet printable PVC plastic cards.



USER REPLACEABLE INK MAINTENANCE CARTRIDGE

The easy removable maintenance cartridge ensures minimum downtime and maximum productivity at all times.

HIGH-SPEED NETWORK CONNECTIVITY

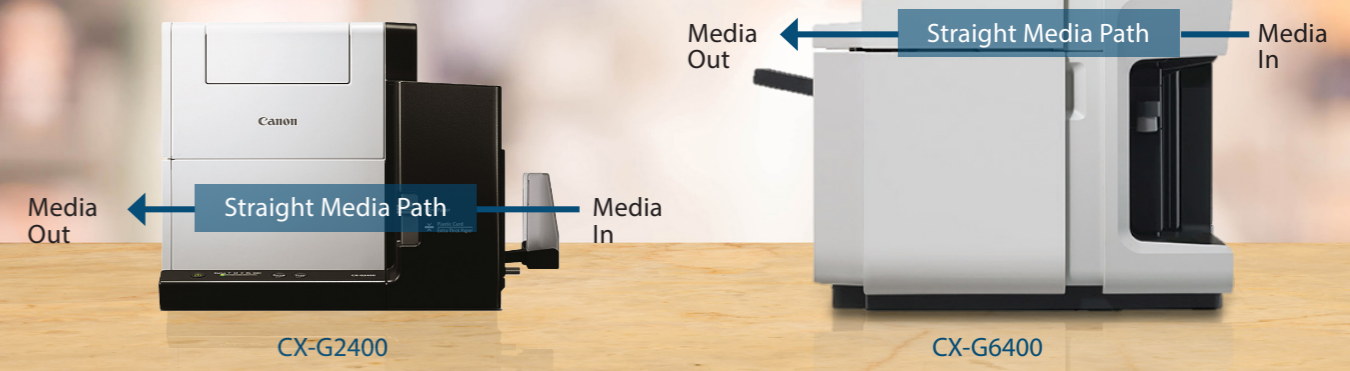
Increase printing efficiency with Gigabit Ethernet support, ideal for sharing the printer with multiple users on the network.

CUSTOM MEDIA SIZE PRINTING

Up to 50 custom media sizes can be set to accommodate your printing needs.

STRAIGHT MEDIA PATH REDUCES MEDIA JAMS

The straight media path guides media through the printer without bending it, reducing the risk of media jams.



CX-G6400

INDIVIDUAL INK TANK WITH LARGE VOLUME



With large ink volume, users can enjoy printing without worrying about cost of printing or ink supplies running low. Only depleted ink cartridge needs to be replaced, reducing ink wastage.

SUPPORTS WIDE RANGE OF MEDIA SIZES

The CX-G6400 supports direct printing on various media sizes. In addition to business cards and plastic cards, the printer also supports postcards, envelopes and oversized plastic cards.



Business Application of Canon Card Printers



Business cards can easily be printed in small quantities on-demand.



Product tags or package labels can be printed easily.



Create professional event passes and press passes in full colour and in any quantity you need.



Customised design on standard or window envelopes.



Issue ID cards, provisional licenses or student passes promptly.



Create membership cards, loyalty cards and even gift cards for in-house and external events.

CX-G2400

MICRO MARGIN PRINTING



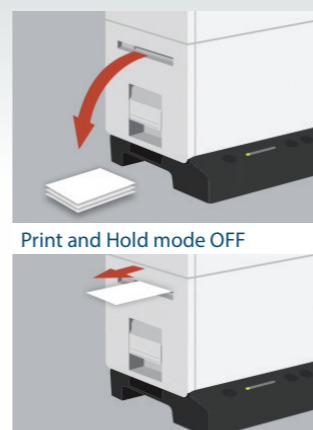
Print margin can be reduced up to 0.3 mm with micro-margin printing, resulting in a near-borderless print with excellent print quality.

COMPACT IN SIZE

The CX-G2400 is designed with a compact footprint, allowing it to be placed on work surfaces or in tight spaces.

PRINT AND HOLD MODE

Print and Hold Mode ensures that printouts remain in the ejection slot after printing is completed. This function helps to prevent mix-ups from multiple card prints for different customers at over-the-counter services.



Which CARD PRINTER best fits my needs?

When choosing the right card printer for your application, it is important that you understand your printing requirements and application.

Some essential questions you need to ask before buying a printer.

1. How much do I print?
2. Is high print speed a requirement for fast output?
3. What type of media and size is needed?
4. How many prints can I get out of the ink cartridges?

Here is a comparison table between the two models.

| Model | CX-G2400 | CX-G6400 |
|--------------------------|--|---|
| Print Speed* | Standard (50 sheets/min) | Faster (100 sheets/min) |
| Print Media | Standard Range (Business Card, Plastic Card) | Wider Range (Business Card, Plastic Card, Oversized Plastic Card, Envelope, Postcard) |
| Print Media Area | Standard (57.4 x 171.4 mm) | Bigger (107.8 x 297 mm) |
| Output per Cartridge Set | Approx. 3,500 sheets | Approx. 24,000 sheets |

* Print speed of business card.

SPECIFICATIONS

| | | CX-G2400 | CX-G6400 | |
|--|-----------------|--|---|--|
| Printing Method | | Inkjet | | |
| Print Colour | | Full Colour | | |
| Print Resolution (max.) | | 1200 x 1200 dpi | | |
| Print Speed | Business Card | 50 sheets/min | 100 sheets/min | |
| | Plastic Card | CR80 (85.6 x 54 mm): 50 sheets/min | CR80 (85.6 x 54 mm): 90 sheets/min Oversized/Large (88.9 x 139.7 mm): 44 sheets/min | |
| | Postcard | - | 4 x 6": 45 sheets/min | |
| | Envelope | - | C6 (114 x 162 mm): 45 sheets/min | |
| First Print Out Time ^{*1} | Business Card | 10 sec or less | 12 sec or less | |
| Maximum Printable Area (W x L) (approx.) | | 57.4 x 171.4 mm | 107.8 x 297 mm | |
| Print Margin (min.) | Top/Bottom | 1.5 mm (Micro Margin: 0.3 mm) ^{*2} | 1.5 mm | |
| | Left/Right | 2.0 mm (Micro Margin: 0.3 mm) ^{*2} | 2.0 mm | |
| Ink Cartridges | Dye-based Ink | BJI-P211C (Cyan): 14.5 ml BJI-P211M (Magenta): 14.5 ml BJI-P211Y (Yellow): 14.5 ml BJI-P211BK (Black): 14.5 ml Approx. Yield: 3,500 sheets ^{*3} | BJI-P411C (Cyan): 105 ml BJI-P412M (Magenta): 105 ml BJI-P411Y (Yellow): 105 ml BJI-P411BK (Black): 105 ml Approx. Yield: 24,000 sheets ^{*3} | |
| | | Maintenance Cartridge | WT-X201 Approx. Yield: 35,000 sheets ^{*3} | WT-X401 Approx. Yield: 72,000 sheets ^{*3} |
| Connectivity | | USB 2.0 Hi-Speed, 1000BASE-T/100BASE-TX/10BASE-T Ethernet | | |
| Noise (approx.) | Operating | 58 dB or less | | |
| | Standby | 35 dB or less | | |
| Operating Environment | Temperature | 15 - 30°C | | |
| | Humidity | 10 - 80% RH (with non condensation) | | |
| OS Compatibility ^{*4} | | Windows 10 (64/32-bit), 8.1 (64/32-bit), 7 SP1 (64/32-bit) | | |
| Power Supply | | AC 100 - 240V, 50/60 Hz | | |
| Power Consumption (approx.) | Maximum | 150 W | 229 W | |
| | Sleep Mode | 5.6 Wh or less | 8.5 Wh or less | |
| Dimensions (W x D x H) (approx.) | | 391 x 180 x 279 mm 457 x 180 x 279 mm (with tray extended) | 415 x 410 x 464 mm 595 x 410 x 464 mm (with tray extended) | |
| Weight ^{*5} (approx.) | | 8 kg | 25 kg | |
| Print Media | Media | Paper | Business Card | Business Card, Postcard, Envelope |
| | | Plastic Card | PVC Card (CR80) | PVC Card (CR80), Oversized/Large PVC Card (88.9 x 139.7 mm) |
| | Media Size | Width | 51 - 58 mm | 85 - 120 mm |
| | | Length | 81 - 91 mm, 157 - 172 mm | 49 - 300 mm ^{*6} |
| | Media Thickness | Paper | 0.21 - 0.76 mm | 0.21 - 0.76 mm |
| | | Plastic Card | 0.39 - 0.6 mm | 0.21 - 0.76 mm |
| | | Envelope | - | 0.24 - 0.48 mm ^{*7} |
| | Media Capacity | Business Card ^{*8} | 250 sheets | 500 sheets |
| | | Postcard ^{*8} | - | 500 sheets |
| | | Plastic Card ^{*9} | 100 sheets | 100 sheets |
| Envelope ^{*8} | | - | 100 sheets | |

Specifications are subject to change without notice.

*1 Based on printing of business card. First Print Priority Mode is turned on for CX-G2400. Exclude print head cleaning time. Subject to change depending on environment and setup.

*2 If the print margins are not aligned, adjust the print trimming position for micro margin printing.

*3 Actual value depends on operating environment, type and frequency of printing.

*4 Operation can only be guaranteed on a PC with pre-installed Windows 10 (64/32-bit), Windows 8.1 (64/32-bit), Windows 7 (64/32-bit).

*5 Printer weight measured excluding print head and ink cartridges installed.

*6 Media length for plastic cards is 49 - 150 mm and for envelopes is 73 - 270 mm.

*7 Maximum seal area thickness is 0.48 mm.

*8 Media capacity is measured based on media thickness of 0.245 mm or less.

*9 Media capacity is measured based on media thickness of 0.4 - 0.76 mm.

Canon

Delighting You Always

SOUTH & SOUTHEAST ASIA REGIONAL HEADQUARTERS

CANON SINGAPORE PTE. LTD.

1 Fusionopolis Place, #14-10 Galaxis, Singapore 138522 | Tel: 65-6799-8888 | Fax: 65-6799-8882 | <https://asia.canon>