



Canon



DIGITAL RADIOGRAPHY

CXDI-Pro

Canon's new pro-range wireless flat panel detectors bring you digital radiography everywhere in the hospital. With its improved communication performance and easy system integration, it assists with simplifying x-rays in the department as well as on mobiles and operating theaters.



Fast

- Cycle time < 5 seconds
- Time for ready < 4 seconds
- Preview 1 second



Tough, Durable & Light weight

- From 2.1 kg
- Covers can be exchanged
- IP55 water & dust resistant

Ergonomic design

- Comfortable hold and grip with 4 positions
- Easier to position
- Less strain for operator
- Easy to clean smooth surface



Battery performance

- More than 9.5 hours in stand by mode
- Battery can easily be exchanged



CXDI Control Software NE

- Optimized workflow
- Body parts and customer specific image processing
- Secure: encryption of data and DICOM compliance
- Optional features like scatter correction, advanced edge enhancement, etc.

Excellent Image quality

- Improved signal to noise ratio



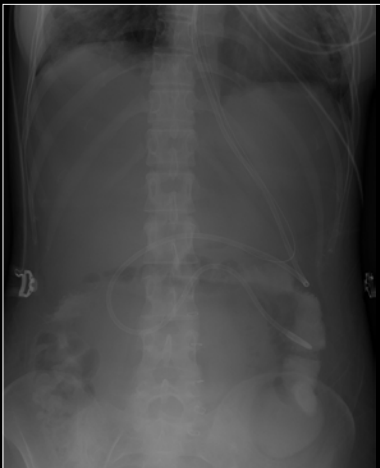
Last image hold

- The last image is always on the detector, even when connection to the WIFI is suddenly interrupted
- This provides you with the confidence that no unnecessary dose is applied to the patients
- Once the WIFI is restored the image is forwarded to the system



Scatter correction (optional)

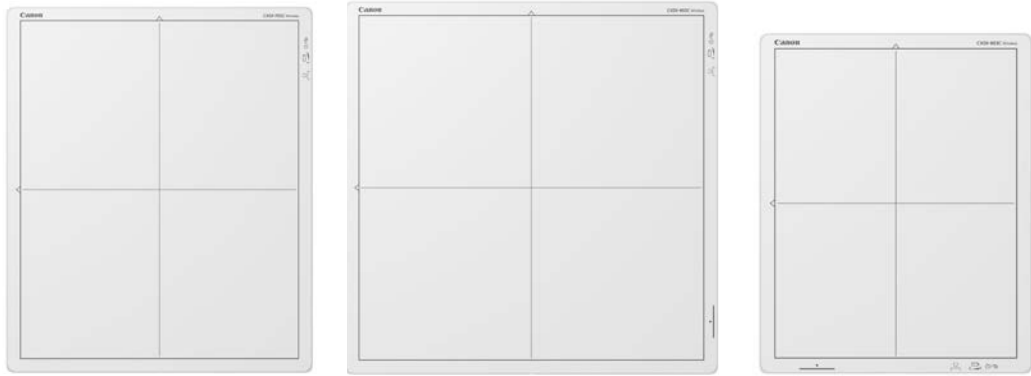
- Excellent image contrast of any body region without a grid
- Reduce detector handling weight
- Eliminate grid misalignments and artefacts
- Dose reduction
- Consistent image quality



Before



After



CXDI-Pro Series Specifications¹

Model name:	CXDI-703C Wireless	CXDI-403C Wireless	CXDI-803C Wireless
Purpose:	General Radiography		
Scintillator:	CsI (Cesium Iodide)		
Weight (incl. battery):	2.9 kg	3.5 kg	2.1 kg
Effective imaging area:	35 x 43 cm	43 x 43 cm	27 x 35 cm
External dimensions:	38 x 46 cm	46 x 46 cm	31 x 38 cm
Image matrix size:	2496 x 3040 pixels	3040 x 3040 pixels	1952 x 2496 pixels
Pixel size:	140 µm		
Resolution:	3.5 lp/mm		
DQE:	Typical 65%(0 lp/mm) / 58%(0.5 lp/mm) ²		
Grey scale:	A/D: 16bit		
Preview image time:	1 sec. ³		
Cycle Time:	<5 sec. ³		
Dust- and waterproof:	IP55 ⁴		
Battery performance:	Standard Synchronisation mode Approx. 1500 images @ 7 sec. cycle, 140 images @ 100 sec. cycle. Non-Generator Connection mode Approx. 1500 images @ 7 sec. cycle, 140 images @ 100 sec. cycle.		
Charging performance:	Detector charging in detector stand: approx. 150 min. ⁵ In battery charger: approx. 150 min. ⁵		
Wireless channel/band:	2.4 GHz, 5 GHz (W52, W53, W56, W58) ⁶		



Detector stand



Battery Charger



Wiring Cable



Multi Box



Power Box



PC connection cable



Ready Indicator



Status Indicator



Battery Pack

¹Specifications subject to change.

²0 lp/mm is extrapolated value IEC62220-1-1 2015 (RQA5).

³Dependent on acquisition mode.

⁴Based on tests conducted by an independent institution.

Certification does not guarantee against failure or damage.

Dust and water resistance may be compromised by substantial impacts (dropping, crushing, etc.).

⁵At an ambient temperature of 25°C

⁶W53, W56 supports only in module receiver mode.