

**Canon**

Delighting You Always



## EYE-ONE PROCESS CONTROL

Color Profiling & Verification  
Eye-One Process Control

Business *can* be simple



# i1Process Control Solution for all Colour Workflow



Canon's **Eye-One Process Control** optimises your complete colour workflow, ensuring the relationship between your graphics creator and print provider is as effective as possible.

This state of the art colour management solution will transform the way you work... impressing clients and colleagues, while saving you up to 30% production time ... and 15% production costs!

Canon's Eye-One Process control optimises your complete colour workflow, ensuring the relationship between your graphics creator and print provider is as effective as possible.

Used in conjunction with Canon imagePRESS, you'll be able to achieve consistent colour from monitor, to proofing, to digital or offset production.

It's the ideal software solution for graphic designers and print professionals - or any business with a desire to stand out amongst the competition.

## EASY TO USE

Eye-One Process Control is the only software solution that gives you easy and complete control of colour consistency across a broad range of applications.

Whether you need a simple hardware calibration across digital devices or a sophisticated end-to-end colour management workflow service that takes multiple external printers or businesses into account, your Canon colour consultants will work with you to create the optimal solution that gives you the competitive advantage.

One that's intuitive and easy to use on a day-to-day basis... a solution that delivers consistent and accurate colour with minimum effort!

## OPTIMISED TO INDUSTRY STANDARDS

With your imagePRESS set up optimised to Printing Industry Standards, you'll achieve consistent colour across the full range of input and output devices. You'll even be able to manage complexities like spot colours or colour changes due to paper stock – whether it's matte, uncoated or coated!

And, because you're working to industry standards, you'll be able to specify colour guidelines and proofing standards to your customers and business partners.

So, regardless of whether you're working within an internal network or in conjunction with external suppliers, you're assured that what you see on your screen will be consistent with the final, printed result.

## SAVES MONEY AND TIME

Saving money and time is a given because this unique software enables you to accurately view the end results on-screen before you print – eliminating the need to tweak and re-print costly proofs and colour jobs to achieve the desired results.

## PROFESSIONAL MONITOR CALIBRATION AND PROFILING

This software provides complete accuracy and consistency whether it's used with an LCD or CRT monitor, or your laptop. It's easy to finesse your settings by adjusting features like the colour temperature, gamma, luminance and of course, contrast and brightness.

Once decided, you can save yourself time in the future, by setting the ICC profile automatically as your current system profile.

## INTELLIGENT SOFTWARE

Canon takes the guesswork out of colour control. You'll receive, automatically generated customer reports to verify your machine is performing to the agreed standard and capable of producing accurate work. And, should there be a deviation in colour performance, your software will automatically implement corrections, ensuring the best results – with the least interference – time and time again.

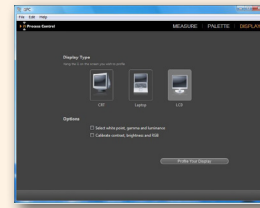
## NOW YOU CAN PLAY WITH COLOUR

So now that you know what you see is what you get, you'll be able to play with colour, experiment with combinations – and create the very best results – every time.

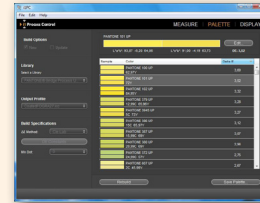
## NO MORE SURPRISES

With Eye-One Process Control, there'll be no more surprises – even if you're switching to digital printing for the first time! Colour communication has never been easier!

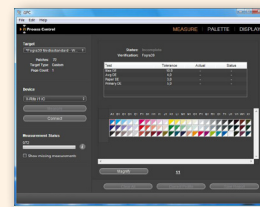
## EYE-ONE PROCESS CONTROL AT A GLANCE



Build Monitor Profiles (.ICC) to better simulate colours for soft-proofing and design.

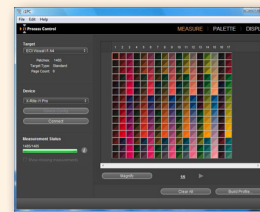


Spot colour matching named colour profiles (.icc)  
Pantone® color bridge ec  
Pantone® color bridge pc  
Pantone® solid coated  
Pantone® solid matt  
Pantone® uncoated



Colour Verification for imagePRESS using FOGRA27/39 Wedges

Simple PASS/FAIL result shows you if your imagePRESS is operating to standard



Build Colour Profiles for any CMYK printer including CTP systems.



 **x-rite**  
right on color



# SPECIFICATIONS

## EYE-ONE PROCESS CONTROL KIT

### SUPPORTED DEVICES

imagePRESS C1+  
 imagePRESS C6000, C7000VP  
 Fiery RIP's and Canon Print Boards

### SYSTEM REQUIREMENTS

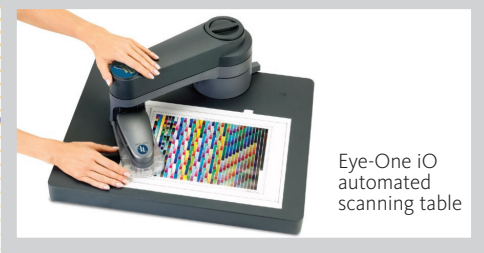
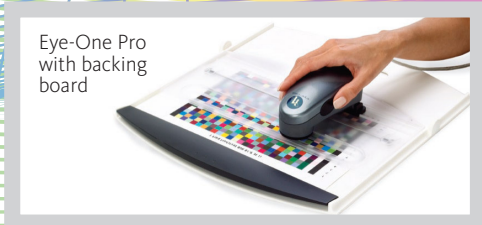
Macintosh PowerPC® or Intel Processor  
 Mac OS X version 10.3.9 or higher  
 Windows Pentium® PC or faster processor  
 Microsoft® Windows 2000/XP/Vista

### EYE-ONE KIT CONTENTS

Eye-One SoftBag  
 Backing Board  
 Monitor Cradle  
 Calibration Cradle  
 Eye-One Pro Spectrophotometer  
 EOPC Software CD (Mac & PC)  
 Product Key (for online registration)

### OPTIONS

X-Rite Eye-One iO automated scanning table



## SOUTH & SOUTHEAST ASIA REGIONAL HEADQUARTERS

### CANON SINGAPORE PTE. LTD.

1 HarbourFront Avenue #04-01, Keppel Bay Tower, Singapore 098632  
 Tel: +65-6799 8888 | Fax: +65-6799 8882 | www.canon-asia.com

## CANON SALES SUBSIDIARIES & BUSINESS PARTNERS

### HONG KONG

Canon HongKong Co. Ltd  
 19/F., Metropolis Tower  
 10 Metropolis Drive,  
 Hunghom, Hong Kong.

Tel: 852 3191 2388  
 Fax: 852 2369 3800  
 www.canon.com.hk

### INDIA

Canon India Private Limited  
 2nd Floor, Tower A & B  
 Cyber Greens, DLF Phase III  
 Gurgaon - 122002  
 Haryana, India

Tel: 91-124-516 0000  
 Fax: 91-124-516 0011  
 www.canon.co.in

### INDONESIA

PT Samafitro  
 Jalan Ir. H Juanda No. 8  
 Jarkarta 10120, Indonesia

Tel: 62-21-345 5521  
 Fax: 62-21-384 4271  
 www.samafitro.co.id

### MALAYSIA

Canon Marketing (Malaysia)  
 Sdn. Bhd  
 Block D, Peremba Square  
 Saujana Resort Section U2,  
 40150 Shah Alam  
 Selangor Darul Ehsan, Malaysia

Tel: 60-3-7844 6000 / 7845 0055  
 Fax: 60-3-7844 6196 / 6198  
 www.canon.com.my

### MONGOLIA

MCS Electronics LLC  
 14th Floor, Central Tower,  
 2 Sukhbaatar Square,  
 Sukhbaatar District-8,  
 Ulaanbaatar-210620A,  
 Mongolia

Tel: 976-11-323705  
 Fax: 976-11-311323

### PHILIPPINES

Canon Marketing (Philippines), Inc  
 Ground Floor  
 Commerce and Industry Plaza,  
 Campus Avenue Cor. Park Avenue  
 McKinley Hill, Fort Bonifacio  
 Taguig City

Tel: 632-884-9000  
 Fax: 632-894-4174  
 www.canon.com.ph

### THAILAND

Canon Marketing (Thailand) Co. Ltd  
 10th Floor Bangkok City Tower  
 179/34-45 South Sathorn Road  
 Bangkok 10120

Tel: 66-2-344 9999  
 Fax: 66-2-344 9960  
 www.canon.co.th