



Made to *Impress*

Create Stunning, Professional Quality Prints

Up to A3+ size for Professional Photographers

Designed for those who demand excellence, the imagePROGRAF PRO-310 features a 10-colour LUCIA PRO ink system that delivers breathtaking colour accuracy and enhanced scratch and light resistance. This ensures your prints not only remain vibrant and true to life but also stand the test of time against wear and fading. Elevate your artistry with prints that are durable, perfect for professional photographers and artists alike.



UP TO 13"
PRINT WIDTH



DEEP BLACK
DENSITY

LUCIA
PRO II ink



STRONG
LIGHT RESISTANCE



STRONG
SCRATCH RESISTANCE



CONNECTIVITY



10
COLOURS
PIGMENT
INK

IMAGING
**POSSIBILITIES
& BEYOND**

Colours that Stand the Test of Time

The imagePROGRAF PRO-310 featuring 10-colour pigment inks, enhances black density and produces more vibrant colour expressions in every print.



The LUCIA PRO II^{*1} ink system brings a new level of excellence to the imagePROGRAF PRO series, offering significant improvements in print quality, durability, and longevity.



LIGHT RESISTANCE

LUCIA PRO II inks feature an improved light-resistant pigment for exceptional colour preservation, ensuring prints maintain their vibrant colour quality for up to 200 years^{*2} without fading.

SCRATCH RESISTANCE^{*3}

The improved scratch resistance minimises potential damage from printing processes or mishandling, particularly on glossy or semi-glossy prints, ensuring that your printouts remain in pristine physical condition.

SUPERIOR PRINT QUALITY

The new formulation of matte black ink significantly enhances black density, delivering deeper and richer black tones. It also improves colour reproducibility in dark areas, resulting in fine gradation details that add depth and dimension to your prints.

^{*1} Applicable to PBK, C, M, Y, PC, PM, GY, R, CO inks.

^{*2} When using Photo Paper Pro Platinum (PT-101). Predicted values calculated in accordance with the indoor lightfastness test method and life criteria of the preservability evaluation method for digital colour photographic print images (JEITA CP-3901B) issued by the Japan Electronics and Information Technology Industries Association (JEITA).

^{*3} Not applicable for non-glossy media.

FEATURES



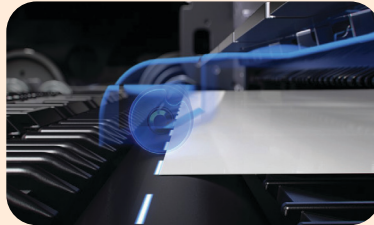
VERSATILE PAPER HANDLING FOR CREATIVE PRINTING

The PRO-310 supports your creative vision with the options to customise border margins for perfect framing, panorama-size paper up to 210 x 594 mm, and the capability to print on long paper lengths of up to 1.8 m.



3.0" COLOUR LCD

A 3.0" colour LCD display panel enables easy navigation of printer functions, offering a quick overview of ink levels, making operation smooth and simple.



RELIABLE PAPER FEEDING

An automatic skew correction function prevents mistakes in paper alignment and helps to reduce paper wastage.



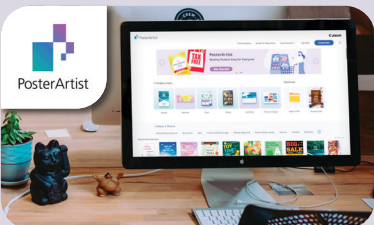
MOBILE & CLOUD PRINTING

Print from smartphones, tablets, laptops and cloud storage with the Canon PRINT and Easy-PhotoPrint Editor apps.

WORKFLOW SOLUTIONS

STREAMLINE YOUR PRINTING PROCESSES

Smoothen your workflows with Canon's complimentary software applications designed to enhance workflow efficiency.



POSTERARTIST WEB

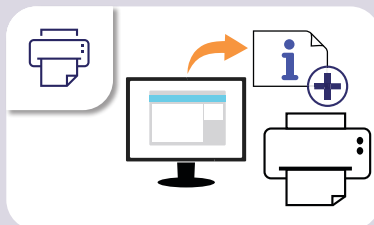
Experiment with bold colours, attractive imagery with minimal efforts. Canon PosterArtist Web offers quick and easy access to hundreds of professionally designed templates, from posters, banners and flyers to menus, party invites, calendars, certificates and more.

Visit <https://posterartist.canon>



PROFESSIONAL PRINT & LAYOUT

Simplify your printing process with the Professional Print & Layout feature, offering a range of useful functions to help you to effortlessly create stunning, professional-quality prints.



MEDIA CONFIGURATION TOOL

The Media Configuration Tool enables users to effortlessly register various media types with their printers and customise media display preferences for a seamless printing experience.



EASY-LAYOUT EDITOR

A desktop application that allows you to freely design, layout and print documents, images and more with simple controls. Print multiple Word documents and PDF files at once or create large posters using multiple sheets of paper.

SPECIFICATIONS			imagePROGRAF PRO-310				
PRINT	Maximum Printing Resolution		4,800 (horizontal) x 2,400 (vertical) ^{†1} dpi				
	Print Speed ^{†2} (approx.)	Photo (A3+ Bordered)	Colour / Mono, PT-101	4 min 15 sec			
		Photo (A4 Bordered)	Colour, PT-101	2 min 30 sec			
	Photo (4 x 6" Borderless)	Colour, PT-101	1 min 45 sec				
PAPER HANDLING	Paper Weight / Thickness	Top Tray	Plain Paper: 64 - 105 g/m ² ; Canon Special Paper: approx. 380 g/m ² (max.)				
		Manual Feed	0.1 - 0.6 mm				
	Media Width		Top Tray: 89 - 329 mm; Manual Feed: 203.2 - 330.2 mm				
	Minimum Printable Paper Length		Top Tray: 127 mm; Manual Feed: 254 mm				
	Maximum Printable Paper Length		1,800 mm				
	Selectable Media Type (max)		35				
	Media Size	Top Tray	A3+, A3, A4, A5, B4, B5, LTR, LGL, LDR, Hagaki, Return Hagaki, L, 2L, 4 x 6", 5 x 7", 7 x 10", 8 x 10", 9 x 13", 10 x 12", 11 x 14", 12 x 12", Square (127 x 127 mm), 210 x 594 mm				
		Manual Feed	A3+, A3, A4, B4, LTR, LGL, LDR, 8 x 10", 9 x 13", 10 x 12", 11 x 14", 12 x 12", 13 x 19" Super B, 210 x 594 mm				
		Multi-Purpose Tray	Printable Disc (120 x 120 mm)				
		Borderless Printing	A3+, A3, A4, A5, B4, B5, LTR, LGL, LDR, Hagaki, L, 2L, 4 x 6", 5 x 7", 13 x 19" Super B, 7 x 10", 8 x 10", 10 x 12", 11 x 14", 12 x 12", Square (127 x 127 mm), 210 x 594 mm				
Media Type	Canon	Top Tray / Manual Feed: Photo Paper Plus Glossy II (PP-201, PP-208), Photo Paper Plus Semi-Gloss (SG-201), Photo Paper Pro Luster (LU-101), Photo Paper Pro Platinum (PT-101), Matte Photo Paper (MP-101)					
		Manual Feed only: Premium Fine Art Rough (FA-RG1), Premium Fine Art Smooth (FA-SM2)					
	Others	Fine Art Papers, Canvas, Bartya Photo Papers, Scrapbooking Papers, Greeting Cards, Plain Paper Multi-Purpose Tray only: Printable Disc					
NETWORK SYSTEM REQUIREMENTS & GENERAL SPECIFICATIONS	Operating System Compatibility	Please visit https://asia.canon/support to confirm OS compatibility and to download the latest drivers.		Windows 11 / 10 / 8.1 / 7 SP1 ^{†3} , macOS 11.7.10 ~ 14 or later, ChromeOS			
	Connectivity	Network		Wireless LAN IEEE 802.11b/g/n, Wired LAN 100BASE-TX/10BASE-T			
		Interface		USB 2.0			
	Canon Printing Apps	Mobile (iOS / Android)		Canon PRINT, Easy-PhotoPrint Editor, Creative Park			
		PC (Windows / Mac)		Canon PRINT, Easy-PhotoPrint Editor, Easy-Layout Editor (Win only), PosterArtist Lite (Win only), PosterArtist Web (browser-based), Professional Print & Layout, Media Configuration Tool			
	Mobile / Cloud Printing Solutions		AirPrint [®] , Mopria [®] Print Service, Canon Print Service (Android), Direct Wireless, Cloud Integration Service				
	Power		AC 100 - 240 V, 50/60 Hz				
	Power Consumption		16 W (Standby: 1.0 W)				
	Operation Panel	Display		3.0" Colour LCD			
	Dimensions (W x D x H)		639 x 379 x 200 mm				
Weight		14.4 kg					
CONSUMABLES	Ink Cartridges	Type / Colours	Pigment Ink / Matte Black, Photo Black, Cyan, Magenta, Yellow, Photo Cyan, Photo Magenta, Grey, Red, Chroma Optimizer				
		Page Yield ^{†4}	Photo Paper, PT-101	A3+ Mono ^{†5}			
	PFI-5100 MBK: 402 PFI-5100 PBK: 34 PFI-5100 C: 115 PFI-5100 M: 129			PFI-5100 Y: 279 PFI-5100 PC: 226 PFI-5100 PM: 203	PFI-5100 GY: 33 PFI-5100 R: 253 PFI-5100 CO: 66		
				A3+ Colour ^{†5}			
			PFI-5100 MBK: 244 PFI-5100 PBK: 41 PFI-5100 C: 82 PFI-5100 M: 100	PFI-5100 Y: 108 PFI-5100 PC: 119 PFI-5100 PM: 76	PFI-5100 GY: 48 PFI-5100 R: 134 PFI-5100 CO: 53		
			4 x 6" Colour ^{†6}				
			PFI-5100 MBK: 1679 PFI-5100 PBK: 450 PFI-5100 C: 842 PFI-5100 M: 610	PFI-5100 Y: 551 PFI-5100 PC: 704 PFI-5100 PM: 430	PFI-5100 GY: 233 PFI-5100 R: 969 PFI-5100 CO: 256		

Specifications are subject to change without notice. For detailed specifications, please refer to product information on <https://asia.canon>.

*1 Ink droplets can be placed with a pitch of 1/2,400 inch at minimum.

*2 Photo print speed is based on the default setting using ISO/JIS-SCID N2 and does not take into account data processing time on host computer. Print speed may vary depending on system configuration, interface, software, document complexity, print mode, page coverage, type of paper used etc.

*3 Operation can only be guaranteed on a PC with a pre-installed Windows 7 or later.

*4 Page yields may vary depending on content coverage, print settings, temperature, humidity, and frequency of printing. Refer to the paper packaging or the instruction manual provided with the paper for information on the recommended temperature and humidity conditions for photo printing paper.

*5 Declared yield value is the estimated value based on Canon individual test method using ISO/JIS-SCID N2 test file at 11 x 14" continuously on A3+, Photo Paper Pro Platinum (PT-101), with the default settings of testing paper using Windows 10 printer driver and Photoshop CC.

*6 Declared yield value is in accordance with ISO/IEC 29102 using the ISO/IEC 29103 chart. Values obtained by continuous printing.



Delighting You Always

**SOUTH AND SOUTHEAST ASIA REGIONAL HEADQUARTERS
CANON SINGAPORE PTE. LTD.**

1 Fusionopolis Place, #14-10 Galaxis, Singapore 138522
Tel : 65-6799-8888 | Fax : 65-6799-8882 | <https://asia.canon>

DEALER'S STAMP

This document is for information purpose only. The contents are subject to change without notice. Product options, name and availability may vary by regions. We expressly disclaim any liability or contractual obligations with respect to this document. Brands and product names are trademarks and/or registered trademarks of their respective owners.