

ALL-IN-ONE DESKTOP LARGE FORMAT PRINTER

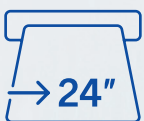
Compact & Versatile for Copy, Print & Scan



TC-20



TC-20M



Max. Print
Width



Roll Paper &
Cut Sheet Support



Compact
Width



280 ml (4 x 70 ml)
Bundled Ink



High durability*
against water



PosterArtist

Free Poster
Creation Software



Scan &
Copy

The brand-new Canon imagePROGRAF TC series provides unparalleled versatility in creating high-quality CAD drawings, posters and large prints. Compact and easy to operate, experience greater productivity that boosts your workflow even in small workplaces with the ability to print up to A1 sizes. Improve business efficiency through enhanced scanning and copying of original documents using the A4 flat-bed scanner.

*Results may vary due to different paper types & printing/weather conditions

COMPACT EFFICIENCY WITH EXCELLENT PRINT QUALITY

The brand-new TC series boasts a small footprint with a width of only 24 inches. The all-colour pigment ink and vivid red colour create stunning printouts that impress, and its ease of operation boosts efficiency and productivity.

COMPACT WIDTH

The 24-inch width helps the TC series to easily fit into shelves, or be placed on desks within small offices while allowing for an optional printer stand and desktop basket.



HIGH IMAGE QUALITY

The TC series features all-colour pigment ink printing and delivers **vivid colour expression** in posters and flyers, especially in **red**. Printouts that are created **do not smudge easily** from water spills & highlighter marks, ensuring that they remain legible.

Vivid Red



Printed with conventional colour



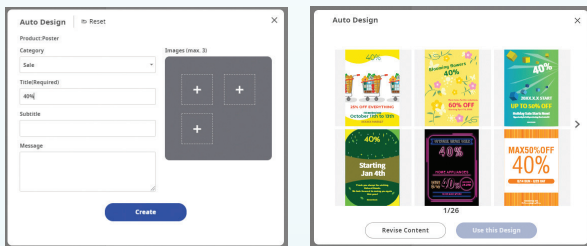
Printed with Vivid Red colour

BUNDLED APPLICATIONS

The TC series comes bundled with Canon software and applications designed to streamline any workflow.

PosterArtist

Canon's PosterArtist (Web Version) software provides an easy way to create and print visually impressive poster designs.



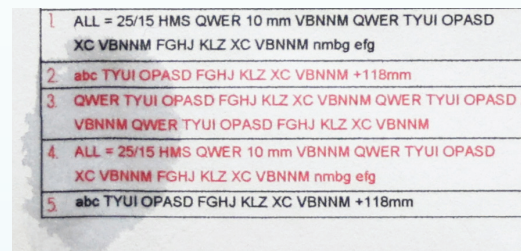
Try for free at <https://posterartist.canon>

PIXMA Cloud Link

PIXMA Cloud Link enables you to store important documents and files in the cloud, where you can access & print them with the TC series.



Effects of water spills* on prints



Lines & text remain visible after water spills

Printed with TC-20

*Water droplets on the drawing 24 hours after it was printed on plain paper "Red Label 75gsm"

AUTOMATIC SWITCHING ROLL PAPER / CUT SHEET

The TC series supports output prints of **up to A1-sized/24-inch width** roll paper alongside the easy loading of cut sheet media, while the Auto Sheet Feeder can cater for **100 A4 or 50 A3 sheets**.



Roll Paper



Cut Sheet

INDUSTRIES & APPLICATIONS



CAD DRAWINGS & GIS MAPS



FOOD & BEVERAGES



EDUCATION

BUNDLED INK BOTTLES

The TC series comes with large bundled ink bottles with a total capacity of 280 ml (4 colours x 70 ml), instantly catering for any print needs.

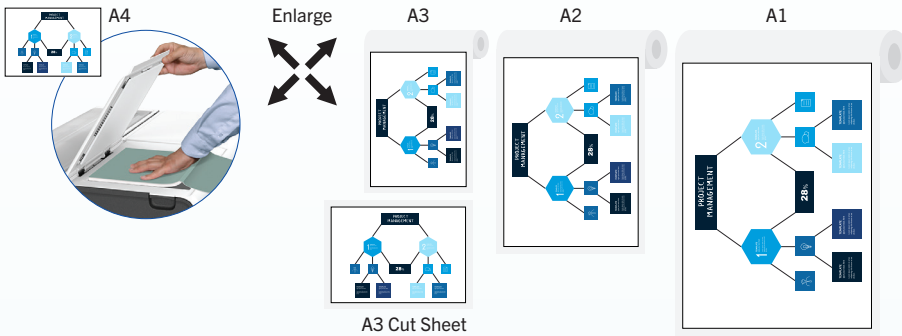


MULTIPLE COPY FUNCTIONS

Enlargement copy, repeat copy, layout copy and image stitch copy functions are available on the TC-20M.

Enlargement Copy

A4 documents can be scanned and enlarged up to A1 or 24" size on roll paper, or up to A3 on cut sheets to maximize the image automatically. The orientation of the image can be selected on the user panel.



Repeated Copy

Repeatedly copy an A4 document to fit the width of roll paper. Fitted to maximum roll width of A1/24" inch.



Layout Copy*

Multiple original images can be copied in order into one continuous layout and fitted to the roll paper width. Fitted to maximum roll width of A1/24" inch.



Maximum of 4 A4 original images can be copied

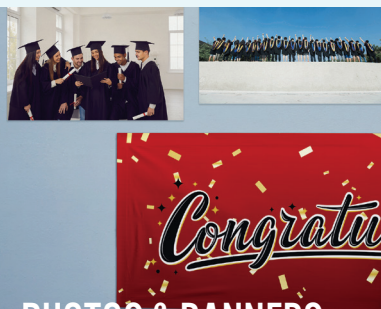
*Available from August 2023



NOTICES & ANNOUNCEMENTS



PHOTOS & BANNERS



A4/A3 DOCUMENTS



SPECIFICATIONS

PRINTER		TC-20	TC-20M
Printer Type	4-Colour, 24"		
Number of Nozzles	4,352 nozzles (BK: 1,280 nozzles, Other Colours: 1,024 nozzles each)		
Max. Print Resolution	2,400 x 1,200 dpi		
Nozzle Pitch	1,200 dpi x 2		
Line Accuracy ¹	± 0.1% or less		
Ink Bottle Size	Sales Ink	70 ml x 4 (BK / C / M / Y)	
	Bundle Starter Ink	70 ml x 4 (BK / C / M / Y)	
Ink Type	Pigment Ink		
Windows Platform	For Printer	Windows Printer Driver	
	For Scanner	-	Windows Scanner Driver, WIA Driver, Windows Scanner Utility, IJ Network Scanner Selector EX
MAC Platform	For Printer	Canon IJ Printer Driver	
	For Scanner	-	IJ Scan Utility Lite
Print Languages	SG Raster	SG Raster, PDF (USB Memory Direct Print), JPEG (Supported Exif ver2.2/2.21/2.3), Job Control: IVEC	
Print Solutions	Apple AirPrint, Mopria, ChromeOS, Canon PRINT Inkjet/SELPHY (iOS/Android), Canon Print Service, Free Layout Plus, PosterArtist Web, Direct Print Plus (PDF/JPEG), PIXUS/PIXMA Cloud Link		
Management Solutions	Media Configuration Tool, Quick Utility Toolbox, Wi-Fi Connection Assistant, Printer Update Utility		
Interface (Built-in)	USB A Port	-	USB Memory (Direct Print), JPEG/PDF ² (Exif ver2.2/2.21/2.3)
	USB B Port	Hi-Speed USB, Full Speed (12 Mbit/sec), Hi-Speed (480 Mbit/sec), Bulk Transfer, Series B (4 pins)	
	Network	IEEE 802.3 10base-T, IEEE 802.3u 100base-TX SNMP, HTTP, TCP/IP (IPv4/IPv6)	
	Wireless LAN	IEEE802.11 b/g/n WPA-PSK (TKIP/AES) WPA2-PSK (TKIP/AES) WPA3-SAE(AES) WPA-EAP(AES) ³ WPA2-EAP(AES) ³ WPA3-EAP(AES) ³	
Memory	1 GB		
Display	LCD (2.7 inch / 6.7 cm) (Touch Screen, Color)		
OS Compatibility	Windows, Macintosh ⁴ Please visit https://asia.canon to confirm OS compatibility and to download the latest drivers.		
SCANNER			
Scanner Type	Flatbed (CIS Scanner)		
Optical Resolution (DPI) ⁴	Grayscale	1200 x 2400 dpi	
	Colour	16bit/8bit	
	Grayscale/ Monochrome	RGB 16bit/8bit	
Scanning Speed	Grayscale/ Monochrome	1.5 ms/line at 300 dpi	
	Colour	3.5 ms/line at 300 dpi	
Maximum Document Size	A4/LTR (216 x 297 mm)		
PRINT SPEED ⁵		A1 SIZE	
Plain Paper	CAD Drawing	32 sec (Draft) (Monochrome)	



Printer Stand + Basket



Desktop Basket

Specifications are subject to change without notice.

¹ User adjustments required. Printing environment and media must match those used for the adjustments. Paper required: Plain paper and coated paper only.

² PDF supports only files generated by TC Series and Canon IJ products.

³ IEEE802.1X (EAP-TLS/EAP-TTLS/PEAP) supported

⁴ Optical resolution is based on the ISO 14473 standard and represents the maximum sampling rate for scanning documents.

MEDIA HANDLING		TC-20	TC-20M
Media Width	Roll Paper	297 - 610 mm (A3 width to 24")	
	Cut Sheet	210 - 297 mm (A3, A4, Letter)	
Media Thickness	Roll Paper/ Cut Sheet	0.08 - 0.28 mm	
	Printable Media Width	Roll Paper	297 - 610 mm
Printable Media Length	Roll Paper	203.2 mm - 4 m	
	Cut Sheet	203.2 - 432 mm	
Media Core Size	2 inch core		
Outside Diameter Roll Paper	110 mm or less		
Media Feed	Roll Paper	1 Roll	
	Cut Sheet	Automatic Switch Function (ASF)	
Delivery Direction	Face-up, Front side		
Margins (Top, Bottom, Side)	Recommended Area (Roll Paper)	Top, Bottom, Left, Right: 5mm ⁶ Some photo modes - Top: 30 mm, Bottom: 30 mm	
	Recommended Area (Cut Sheet)	Top, Bottom, Left, Right: 5mm	
	Printable Area (Roll Paper)	Top, Bottom, Left, Right: 5mm ⁶ Some photo modes - Top: 30 mm, Bottom: 30 mm	
	Printable Area (Roll Paper Borderless)	-	
	Printable Area (Cut Sheet)	Top, Bottom, Left, Right: 5mm	
DIMENSIONS (W x D x H) & WEIGHT ⁶			
Packaged Dimensions	Printer	1120 x 726 x 406 mm Weight: 43 kg	1120 x 726 x 406 mm Weight: 45kg
	Stand + Basket (SD-24) (W x D x H)	1055 x 824 x 268 mm Weight: 16 kg	
	Desktop Basket (BU-06) (W x D x H)	798 x 301 x 111 mm Weight: 1.8 kg	
Printer	Printer	968 x 545 x 395 mm (Auto Sheet Feeder Opened) 968 x 525 x 245 mm (Auto Sheet Feeder Closed) Weight ⁷ : 32 kg	968 x 545 x 395 mm (Auto Sheet Feeder Opened) 968 x 525 x 245 mm (Auto Sheet Feeder Closed) Weight ⁷ : 33 kg
	With Stand + Basket (SD-24) (W x D x H)	968 x 870 x 874 mm (Basket Opened) 968 x 707 x 874 mm (Basket Closed) Weight ⁷ : 40 kg	968 x 870 x 874 mm (Basket Opened) 968 x 707 x 874 mm (Basket Closed) Weight ⁷ : 42kg
	With Desktop Basket (BU-06) (W x D x H)	968 x 825 x 965 ⁸ mm (Basket Opened) 968 x 595 x 965 ⁸ mm (Basket Closed) Weight ⁷ : 33kg	968 x 825 x 965 ⁸ mm (Basket Opened) 968 x 595 x 965 ⁸ mm (Basket Closed) Weight ⁷ : 34kg
POWER & OPERATING REQUIREMENTS			
Power Supply (Printer)	AC 100 - 240 V (50 - 60 Hz)		
Power Consumption (Printer)	Operation	Operation: < 28 W, Sleep Mode: < 1.8 W	Operation: < 26 W, Sleep Mode: < 1.9 W
	Sleep Mode	< 2.4 W	
	Power OFF	< 0.3 W	
Recommended Environment	Temperature	15 - 30 °C	
	Humidity	10 - 80% RH (no dew condensation)	
Acoustics	Power ⁹	Approx. 6.0 Bels	
	Pressure ⁹	Approx. 42.5 dB(A), Standby 35 dB(A) or less	Approx. 41.5 dB(A), Standby 35 dB(A) or less
OPTIONAL ACCESSORIES			
Roll Unit	-		
2/3" Roll Holder	-		
Printer Stand + Basket	SD-24		
Desktop Basket	BU-06		
CONSUMABLES			
Ink Bottle	PFI-050 (70 ml)		
Print Head	PF-08		
Cutter Blade	Not applicable		
Maintenance Cartridge	MC-32		

DIMENSIONS (W x D x H) & WEIGHT⁶

Packaged Dimensions	Printer	1120 x 726 x 406 mm Weight: 43 kg	1120 x 726 x 406 mm Weight: 45kg
	Stand + Basket (SD-24) (W x D x H)	1055 x 824 x 268 mm Weight: 16 kg	
	Desktop Basket (BU-06) (W x D x H)	798 x 301 x 111 mm Weight: 1.8 kg	
Printer	Printer	968 x 545 x 395 mm (Auto Sheet Feeder Opened) 968 x 525 x 245 mm (Auto Sheet Feeder Closed) Weight ⁷ : 32 kg	968 x 545 x 395 mm (Auto Sheet Feeder Opened) 968 x 525 x 245 mm (Auto Sheet Feeder Closed) Weight ⁷ : 33 kg
	With Stand + Basket (SD-24) (W x D x H)	968 x 870 x 874 mm (Basket Opened) 968 x 707 x 874 mm (Basket Closed) Weight ⁷ : 40 kg	968 x 870 x 874 mm (Basket Opened) 968 x 707 x 874 mm (Basket Closed) Weight ⁷ : 42kg
	With Desktop Basket (BU-06) (W x D x H)	968 x 825 x 965 ⁸ mm (Basket Opened) 968 x 595 x 965 ⁸ mm (Basket Closed) Weight ⁷ : 33kg	968 x 825 x 965 ⁸ mm (Basket Opened) 968 x 595 x 965 ⁸ mm (Basket Closed) Weight ⁷ : 34kg

POWER & OPERATING REQUIREMENTS

Power Supply (Printer)	AC 100 - 240 V (50 - 60 Hz)		
Power Consumption (Printer)	Operation	Operation: < 28 W, Sleep Mode: < 1.8 W	Operation: < 26 W, Sleep Mode: < 1.9 W
	Sleep Mode	< 2.4 W	
	Power OFF	< 0.3 W	
Recommended Environment	Temperature	15 - 30 °C	
	Humidity	10 - 80% RH (no dew condensation)	
Acoustics	Power ⁹	Approx. 6.0 Bels	
	Pressure ⁹	Approx. 42.5 dB(A), Standby 35 dB(A) or less	Approx. 41.5 dB(A), Standby 35 dB(A) or less

OPTIONAL ACCESSORIES

Roll Unit	-		
2/3" Roll Holder	-		
Printer Stand + Basket	SD-24		
Desktop Basket	BU-06		

CONSUMABLES

Ink Bottle	PFI-050 (70 ml)		
Print Head	PF-08		
Cutter Blade	Not applicable		
Maintenance Cartridge	MC-32		

⁵ Time taken to print one page does not include time required for data processing, data transfer and pre-printing operations.

⁶ Includes roll holder set.

⁷ Weight includes print head, excluding ink.

⁸ Height above which desktop basket's cloth does not touch the floor when opening the desktop basket.

⁹ Acoustic power and pressure are measured using ISO 7779 standard.



SOUTH AND SOUTHEAST ASIA REGIONAL HEADQUARTERS
CANON SINGAPORE PTE. LTD.

1 Fusionopolis Place, #14-10 Galaxis, Singapore 138522

Tel : 65-6799-8888 | Fax : 65-6799-8882 | <https://asia.canon>

Delighting You Always

DEALER'S STAMP

This document is for information purposes only. The contents are subject to change without notice. Product options, name and availability may vary by regions. We expressly disclaim any liability or contractual obligations with respect to this document. Brands and product names are trademarks and/or registered trademarks of their respective owners.