

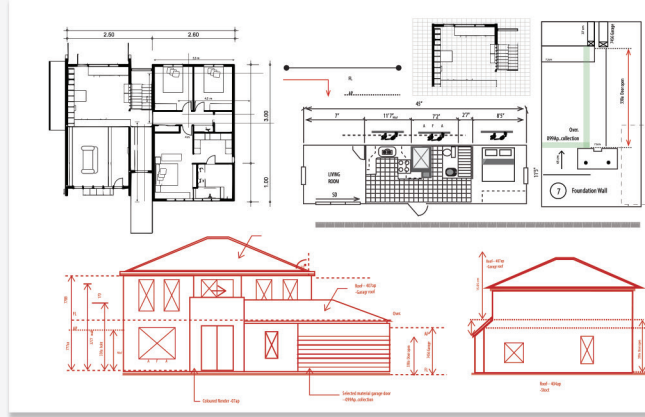
imagePROGRAF  
TC Series

**Canon**  
Delighting You Always

# ALL-IN-ONE DESKTOP LARGE FORMAT PRINTER



Compact & Versatile for Copy, Print & Scan



Tiltable Display  
for easier viewing



TC-21



TC-21M



Max. Print Width



Roll Paper &  
Cut Sheet Support



Minimal Margin  
Printing



Compact  
Width



Refillable Ink Bottles  
280 ml (4 x 70 ml)



High durability\*  
against water



Free Poster  
Creation Software

The imagePROGRAF TC Series provides exceptional versatility in creating high-quality CAD drawings, posters and large prints. Compact and easy to operate, experience greater productivity that boosts your workflow even in small workplaces with the ability to print from A6 to A1 sizes. Improve business efficiency through enhanced scanning and copying of original documents using the A4 flat-bed scanner.

\*Results may vary due to different paper types & printing/weather conditions.

# COMPACT EFFICIENCY WITH EXCELLENT PRINT QUALITY

The TC series boasts a small footprint with a width of 24 inches. The 4-colour pigment ink produces vivid red colours create stunning printouts that impress, and its ease of operation boosts efficiency and productivity.

## COMPACT WIDTH

The 24-inch width helps the TC series to easily fit into shelves, or be placed on desks within small offices while allowing for an optional printer stand and desktop basket.



## MINIMAL MARGIN PRINTING

The TC series delivers high quality output on roll paper with minimal margins of approximately 0.5mm on the left and right sides, keeping it borderless on the top and bottom.

## VERSATILE MEDIA HANDLING

Supports a wide range of paper sizes from A6 to A1-sized/24-inch width and various paper types like from postcards, envelopes, labels and office documents to CAD line drawings, posters and long banners.



## BUNDLED APPLICATIONS



Canon's PosterArtist (Web Version) software provides an easy way to create and print visually impressive poster designs.

Try for free at <https://posterartist.canon>

## INDUSTRIES & APPLICATIONS

## HIGH IMAGE QUALITY

The TC series improves in colour mapping for more accurate reproduction, producing a more dense and vivid colour expression in posters and flyers.

### Vivid Colours

#### Poster Design



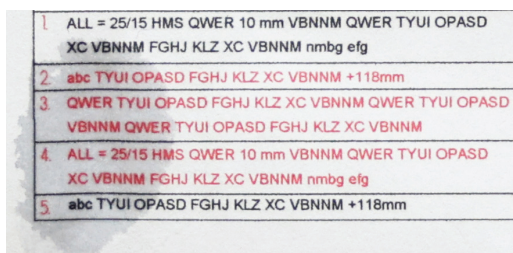
Printed with conventional colour

#### Poster Design



Printed with Vivid colours

### Effects of water spills\* on prints



Lines & text remain visible after water spills

Printed with TC-21

\*Water droplets on the drawing 24 hours after it was printed on plain paper "Red Label 75gsm"

## AUTOMATIC SWITCHING ROLL PAPER / CUT SHEET

The TC series supports output prints of up to **A1-sized/24-inch width roll paper** alongside the easy loading of cut sheet media, while the Auto Sheet Feeder can cater up to **100 A4\*** or **50 A3\*** sheets.



Roll Paper



Cut Sheet

\*Plain paper



CAD DRAWINGS & GIS MAPS



POSTERS



EDUCATION



# BUNDLED INK BOTTLES

The TC series comes with large bundled ink bottles with a total capacity of 280 ml (4 colours x 70 ml), instantly catering for any print needs.

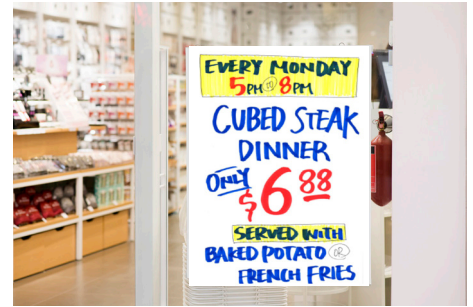
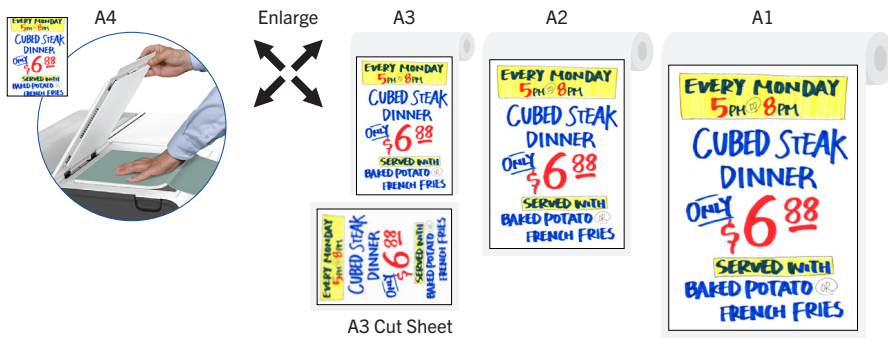


# MULTIPLE COPY FUNCTIONS

Enlargement copy, repeated copy, layout copy, image stitch copy and split & enlarge copy functions are available on the TC-21M.

## Enlargement Copy

A4 documents can be scanned and enlarged up to A1 or 24" size on roll paper, or up to A3 on cut sheets to maximize the image automatically. The orientation of the image can be selected on the user panel.



## Repeated Copy

Repeatedly copy an A4 document to fit the width of roll paper. Fitted to maximum roll width of A1/24", or A4 on cut sheets.



A4



A1 roll



## Layout Copy

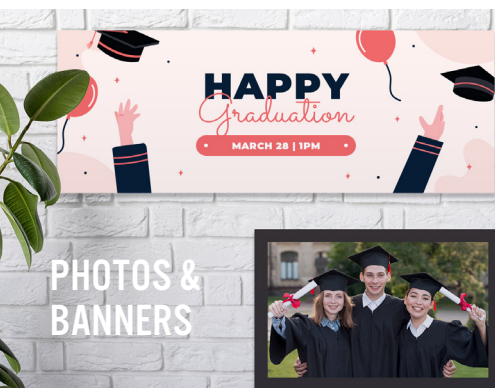
Multiple original images can be copied in order into one continuous layout and fitted to the roll paper width. Fitted to maximum roll width of A1/24" inch.



A3 roll

1 x 4 (4 images)

Maximum of 4 A4 original images can be copied



PHOTOS & BANNERS



ENVELOPES, DIRECT MAIL & LABELS



A4/A3 DOCUMENTS

# SPECIFICATIONS

PRINTER		TC-21	TC-21M
Printer Type		4-Colour, 24"	
Number of Nozzles		4,352 nozzles (BK: 1,280 nozzles, Other Colours: 1,024 nozzles each)	
Max. Print Resolution		2,400 x 1,200 dpi	
Nozzle Pitch		1,200 dpi x 2	
Line Accuracy <sup>1</sup>		± 0.1% or less	
Ink Bottle Size	Sales Ink	70 ml x 4 (BK / C / M / Y)	
	Bundle Starter Ink	70 ml x 4 (BK / C / M / Y)	
Ink Type		Pigment Ink	
Windows Platform	For Printer	Windows Printer Driver	
	For Scanner	-	Windows Scanner Driver, WIA Driver, Windows Scanner Utility, IJ Network Scanner Selector EX
MAC Platform	For Printer	Canon IJ Printer Driver	
	For Scanner	-	IJ Scan Utility Lite
Print Languages		SG Raster	SG Raster, PDF, JPEG
Print Solutions		ChromeOS, Canon PRINT Inkjet/SELPHY (iOS/Android), Canon Print Service, Free Layout Plus, PosterArtist Web, Direct Print Plus (PDF/JPEG), PIXUS/PIXMA Cloud Link	
Management Solutions		Media Configuration Tool, Quick Utility Toolbox, Wi-Fi Connection Assistant, Printer Update Utility	
Interface (Built-in)	USB A Port	-	USB Memory (Direct Print), JPEG/PDF <sup>2</sup> (Exif ver2.2/2.21/2.3)
	USB B Port	Hi-Speed USB, Full Speed (12 Mbit/sec), Hi-Speed (480 Mbit/sec), Bulk Transfer, Series B (4 pins)	
	Network	IEEE 802.3 10base-T, IEEE 802.3u 100base-TX, SNMP HTTP, TCP/IP (IPv4/IPv6)	
	Wireless LAN	IEEE802.11 a/b/g/n/ac WPA-PSK (TKIP/AES) WPA2-PSK (TKIP/AES) WPA3-SAE(AES) WPA-EAP(AES) <sup>3</sup> WPA2-EAP(AES) <sup>3</sup> WPA3-EAP(AES) <sup>3</sup>	
Memory		1 GB	
Display		LCD (2.7 inch / 6.7 cm) (Touch Screen, Color,Tilt)	
OS Compatibility		Windows, Macintosh <i>*Please visit <a href="https://asia.canon">https://asia.canon</a> to confirm OS compatibility and to download the latest drivers.</i>	
SCANNER			
Scanner Type		Flatbed (CIS Scanner)	
Optical Resolution (DPI) <sup>4</sup>	Grayscale	1200 x 2400 dpi	
	Colour	16bit/8bit	
Scanning Speed	Grayscale/Monochrome	1.5 ms/line at 300 dpi	
	Colour	3.5 ms/line at 300 dpi	
Maximum Document Size		A4/LTR (216 x 297 mm)	
PRINT SPEED <sup>5</sup>		A1 SIZE	
Plain Paper	CAD Drawing	30 sec (Draft) (Monochrome)	



Printer Stand + Basket



Desktop Basket

Specifications are subject to change without notice.

- <sup>1</sup> User adjustments required. Printing environment and media must match those used for the adjustments.  
 Paper required: Plain paper and coated paper only.  
<sup>2</sup> PDF supports only files generated by TC Series and Canon IJ products.  
<sup>3</sup> IEEE802.1X (EAP-TLS/EAP-TTLS/PEAP) supported.  
<sup>4</sup> Optical resolution is based on the ISO 14473 standard and represents the maximum sampling rate for scanning documents.  
<sup>5</sup> A1 page portrait orientation, plain paper with fastest print mode setting. Print speed (time taken to print one page) does not include time required for data processing, data transfer and pre-printing operations.  
<sup>6</sup> Supported roll paper widths are 24 inch, 18 inch, 17 inch, A1, A2, A3, B2, B3. The left and right margins are approximately 0.5 mm. There may be a margin of approximately 0.1 – 0.8 mm depending on printing conditions and the printing environment. Backlight film, tracing paper and translucent matte film are not supported.

MEDIA HANDLING		TC-21	TC-21M
Media Width	Roll Paper	297 - 610 mm (A3 width to 24")	
	Cut Sheet	89 - 297 mm (A3, A4, Letter, A5, A6)	
Media Thickness	Roll Paper/ Cut Sheet	0.08 - 0.28 mm	
	Printable Media Width	Roll Paper	297 - 610 mm
Printable Media Length	Roll Paper	203.2 mm - 4 m	
	Cut Sheet	127 - 1200 mm	
Media Core Size		2 inch core	
Outside Diameter Roll Paper		110 mm or less	
Media Feed	Roll Paper	1 Roll	
	Cut Sheet	Automatic Switch Function (ASF)	
Delivery Direction		Face-up, Front side	
Margins (Top, Bottom, Side)	Recommended Area (Roll Paper)	Top, Bottom, Left, Right: 5mm <i>*Some photo modes - Top: 30 mm, Bottom: 30 mm</i>	
	Recommended Area (Cut Sheet)	Top, Bottom, Left, Right: 5mm	
	Printable Area (Roll Paper)	Top, Bottom, Left, Right: 5mm <i>*Some photo modes - Top: 30 mm, Bottom: 30 mm</i>	
	Printable Area (Roll Paper Minimal Margin Print <sup>6</sup> )	Top, Bottom: 0 mm, Left, Right: approx. 0.5 mm	
Printable Area (Cut Sheet)	Top, Bottom, Left, Right: 5mm		

## DIMENSIONS (W x D x H) & WEIGHT<sup>7</sup>

Packaged Dimensions	Printer	1120 x 726 x 406 mm Weight: 45 kg	1120 x 726 x 406 mm Weight: 46 kg
	Stand + Basket (SD-24) (W x D x H)	1058 x 826 x 270 mm Weight: 20kg	
Desktop Basket (BU-06) (W x D x H)	798 x 301 x 111 mm Weight: 2.0 kg		
Printer Dimension	Printer	968 × 613 × 395 mm (ASF <sup>8</sup> Opened, OP <sup>9</sup> Opened) 968 × 553 × 395 mm (ASF <sup>8</sup> Opened, OP <sup>9</sup> Closed) 968 × 593 × 245 mm (ASF <sup>8</sup> Closed, OP <sup>9</sup> Opened) 968 × 533 × 245 mm (ASF <sup>8</sup> Closed, OP <sup>9</sup> Closed)	
		Weight <sup>10</sup> : 32 kg	Weight <sup>10</sup> : 34 kg
	With Stand + Basket (SD-24) (W x D x H)	968 × 868 × 1024 mm (ASF <sup>8</sup> , OP <sup>9</sup> , Basket Opened) 968 × 720 × 874 mm (ASF <sup>8</sup> , OP <sup>9</sup> , Basket Closed)	
		Weight <sup>10</sup> : 43 kg	Weight <sup>10</sup> : 44 kg
With Desktop Basket (BU-06) (W x D x H)	968 × 845 × 1115 <sup>11</sup> mm (ASF <sup>8</sup> , OP <sup>9</sup> , Basket Opened) 968 × 595 × 965 <sup>11</sup> mm (ASF <sup>8</sup> , OP <sup>9</sup> , Basket Closed)		
	Weight <sup>10</sup> : 33 kg	Weight <sup>10</sup> : 35 kg	

## POWER & OPERATING REQUIREMENTS

Power Supply (Printer)		AC 100 - 240 V (50 - 60 Hz)
Power Consumption (Printer)	Operation	Operation: Approx. 28 W, Sleep Mode: Approx. 1.7 W
	Sleep Mode	Approx. 2.3 W
	Power OFF	Approx. 0.07 W
Recommended Environment	Temperature	15 - 30 °C
	Humidity	10 - 80% RH (no dew condensation)
Acoustics	Power <sup>12</sup>	Approx. 6.0 Bels
	Pressure <sup>12</sup>	Approx. 41.5 dB(A), Standby 35 dB(A) or less

## OPTIONAL ACCESSORIES

Roll Unit	-
2/3" Roll Holder	-
Printer Stand + Basket	SD-24
Desktop Basket	BU-06

## CONSUMABLES

Ink Bottle	PFI-050 (70 ml)
Print Head	PF-08
Maintenance Cartridge	MC-32

<sup>7</sup> Includes roll holder set.

<sup>8</sup> Auto Sheet Feeder

<sup>9</sup> Operation Panel

<sup>10</sup> Weight includes print head, excluding ink.

<sup>11</sup> Height above which desktop basket's cloth does not touch the floor when opening the desktop basket.

<sup>12</sup> Acoustic power and pressure are measured using ISO 7779 standard.



SOUTH AND SOUTHEAST ASIA REGIONAL HEADQUARTERS  
**CANON SINGAPORE PTE. LTD.**

1 Fusionopolis Place, #14-10 Galaxis, Singapore 138522

Tel: 65-6799-8888 | Fax: 65-6799-8882 | <https://asia.canon>

Delighting You Always

DEALER'S STAMP

This document is for information purposes only. The contents are subject to change without notice. Product options, name and availability may vary by regions. We expressly disclaim any liability or contractual obligations with respect to this document. Brands and product names are trademarks and/or registered trademarks of their respective owners.