

PowerShot

Canon

Delighting You Always



PowerShot G9X Mark II

Power that Fits in Your Palm

For anyone looking for an ultra-portable premium point-and-shoot camera, the new PowerShot G9 X Mark II is the perfect answer. Featuring a 1.0-inch 20.2 Megapixel sensor and the latest DIGIC 7 image processor, the camera packs a lot of punch albeit its stylishly compact body. Expect an impressive RAW format burst shooting at up to 8.2 fps, faster Autofocus tracking and better scene recognition. As the first PowerShot camera to be equipped with Bluetooth®, pairing with compatible smart devices is a much welcomed social network-sharing convenience.

High-Speed Continuous Shooting
Approx. 8.2 Frames Per Sec



DiGiC
7

1.0
type
CMOS

20.1 MEGA
PIXELS
HIGH-SENSITIVITY
CMOS

3x
OPTICAL
ZOOM

F2.0-4.9
LENS

3.0"
WIDE
Touch

Wi-Fi / NFC

Bluetooth™

Built for Breathtaking Images

PowerShot G9 X Mark II packs a huge 1-inch image sensor, DIGIC 7 image processor and a bright f/2-4.9 lens, all within a compact body, thus producing high quality images with a wide dynamic range, beautiful background blur even in low light conditions.



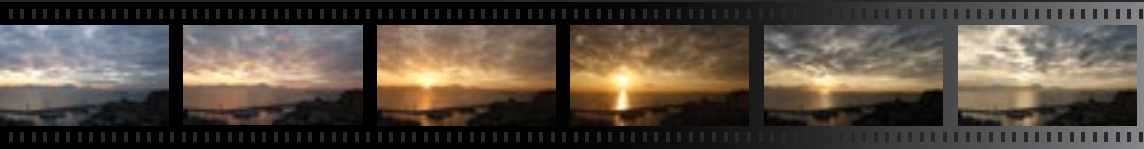
Star trails



Panning

Built for Pro-like Photography

Users of all skill levels will appreciate professional features such as in-camera RAW image processing, Panning assist, Star Trails and improved Time-Lapse Movie mode to achieve high quality time-lapse movie without the difficult settings.



Time Lapse Movie mode

Built for Your Connected World



Sharing your best shot is now easier than ever. Built-in Wi-Fi and NFC functions enable cableless transferring and uploading of your favourite photos on any social media sites. With Bluetooth® low energy technology, the camera is constantly connected to your smart device without excessively draining the batteries. Via the Camera Connect application, your smart device can also function as a remote control for remote shooting and playback.



PowerShot G9 X Mark II | Specifications

Imaging Processor	DIGIC 7
IMAGE SENSOR	
Camera Effective Pixels	Approx. 20.1 megapixels (aspect ratio: 3:2)
Sensor Size	1.0-inch type
LENS	
Focal Length	3x zoom: 10.2 (W) - 30.6 (T) mm 35mm film equivalent: 28 (W) - 84 (T) mm
Focusing Range	5cm (2.0in.) - infinity (W), 35cm (1.1ft.) - infinity (T) Macro: 5 - 50cm (W) (2.0in. - 1.6ft. (W))
Image Stabilizer (IS) System	Lens-shift type
LCD MONITOR	
Type	3.0-inch type, TFT colour LCD with wide viewing angle
Effective Pixels	Approx. 1.04 million dots
Aspect Ratio	3:2
Features	Touch-screen panel (capacitive type)
FOCUS	
Control System	Autofocus: One-shot AF, Servo AF Manual Focus
AF Frame	1-point, Face+Tracking (AF points: up to 31) Touch AF is available
Metering System	Evaluative, Center-weighted average, Spot
ISO Speed (Standard Output Sensitivity, Recommended Exposure Index)	AUTO, ISO 125 - ISO 12800 1/3-stop increments
Shutter Speed	1 - 1/2000sec. 30 - 1/2000sec. (in Tv Mode) (BULB) - 1/2000sec. (in M Mode)
APERTURE	
Type	Iris diaphragm
f/number	f/2.0 - f/11 (W), f/4.9 - f/11 (T)
FLASH	
Modes	Auto, On, Slow Synchro, Off
Range	50cm - 6.0m (W), 50cm - 2.4m (T) (1.6 - 20ft. (W), 1.6 - 7.9ft. (T))

SHOOTING SPECIFICATIONS		
Shooting Modes	C, M, Av, Tv, P, Hybrid Auto, Auto, SCN ¹ , Movie ² ¹ Portrait, Panning, Star ³ , Handheld Night Scene, Grainy B/W, Background Defocus, Soft Focus, Fish-eye Effect, Art Bold Effect, Water Painting Effect, Toy Camera Effect, Miniature Effect, High Dynamic Range, Fireworks ² Standard Movie, Short Clip, Manual Movie, Time-lapse movie, iFrame Movie ³ Star Portrait, Star Nightscape, Star Trails, Star Time-Lapse Movie Shooting movies is possible with the movie button	
Continuous shooting (AUTO, P Mode)	Up to approx. 8.2 shots/ sec.	
RECORDING SPECIFICATIONS		
Number of Recording Pixels	Still Images: (4:3) 4:3 L: 4864 x 3648 M: 3248 x 2432 S1: 2432 x 1824 S2: 2112 x 1600	
	Still Images: (3:2) 3:2 L: 5472 x 3648 M: 3648 x 2432 S1: 2736 x 1824 S2: 2400 x 1600	
	Aspect Ratio:	3:2 / 16:9 / 4:3 / 1:1
	Movies:	1920 x 1080 / 1280 x 720 / 640 x 480
Power Supply	Battery Pack NB-13L	
Number of Shots (CIPA compliant)	Approx. 235 images	
Number of Shots (Eco Mode)	Approx. 315 images	
Movie Recording Time (Actual usage time)	Approx. 60mins.	
Dimensions (CIPA compliant)	98.0 x 57.9 x 31.3mm (3.9 x 2.3 x 1.2in.)	
Weight (CIPA compliant)	Approx. 206g (7.3oz.) (including the battery and memory card)	
Other Features	Wi-Fi, NFC, Bluetooth, Control Ring, USB Charging	

Insist on an original warranty by your sales office. Specifications are subject to change without notice. Images are simulated.

0205W992