

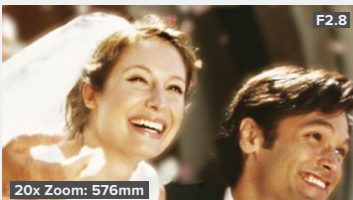
PRECISION & PROWESS  
IN MOTION CAPTURE

# XF205 / XF200



▶ **WIDE-ANGLE HD VIDEO LENS**

Both the XF205 and XF200 sport a wide-angle 20x HD video lens with a focal length of 26.8mm to 576mm (35mm equivalent), while maintaining an aperture range of f1.8 to f2.8. The Canon 20x HD Video lens provides an extended zoom range optimized for both wide angle and extreme telephoto shooting options.



## PROFESSIONAL PERFORMANCE WHERE IT COUNTS

Keep up with the latest news in the field or pursue the creative vision that leads to groundbreaking stories. The new XF205 and XF200 empower users with high performance shooting capabilities in an ergonomic design and many time-saving features such as simultaneous dual-format recording, improved camera operation and handling, as well as powerful network capabilities.

Whether covering live news, broadcasting events, producing variety shows or documentaries, on location or in the studio, the XF205 and XF200 is ideal for both amateurs and professionals.



▶ **HD CMOS PRO SENSOR & DIGIC DV 4 PROCESSOR**

The HD CMOS PRO sensor supports the Genuine Canon 20x HD Video lens with a 1/2.84 inch 1920 x 1080 sensor. The sensor works with the DIGIC DV 4 image processor to produce high-quality images of greater depth with low noise levels, even when shooting under low-light conditions. The DIGIC DV 4 image processor also enables an improved image stabilization performance for steady and shake-free videos for steady and shake-free videos.

*Image stabilization performance for steady and shake-free videos with handheld shooting*





## WIDE DR GAMMA

**NEW!**

New to the XF205 and XF200 is Wide DR Gamma. It reduces overexposure and retains details in the highlight areas, thus realizing a dynamic range of 600%. With that, the post production process is streamlined yet color grading is still possible since the information has been preserved.



Image in Normal 1

Image in Wide DR Gamma

## 4-CHANNEL AUDIO RECORDING

**NEW!**

Recording high-quality 16-bit linear PCM sound at 48kHz on two or four channels is now supported on the XF205 and XF200. The 4-channel audio recording is great for capturing various sound sources on individual channels, such as in live interviews or news reportage. Volume level control is supported for all four channels.



Audio 4ch

## TERMINALS FOR VARIED APPLICATIONS

The XF205 features SD/HD-SDI, HD/3G-SDI, TC, and GENLOCK/SYNC OUT terminals for commercial applications such as using the SD-HD-SDI terminal to transmit uncompressed Full HD or SD signal directly to broadcast vans, news trucks, or external recorders.

## MPEG-2 4:2:2 50MBPS MXF AND MP4

The XF205 and XF200 record brilliant videos in Full HD (1920 x 1080) at a maximum bit rate of 50 Mbps with 4:2:2 color sampling and industry-standard MPEG-2 compression. 4:2:2 chroma sub-sampling ensures ultra-fine tonal transitions through post-production processes such as compositing or color grading. A high-bandwidth 50 Mbps bit rate and versatile MPEG-2 compression delivers videos of high-quality color rendition and image detail that is suitable for editing with a wide range of compatible non-linear editing (NLE) software.

## VERSATILE RECORDING MODES

The XF205 and XF200 come with two slots for CF cards and a slot for an SD card. This allows users to perform double-slot MXF format recording on the CF cards while simultaneously recording MP4 files onto the SD card as a backup.



## BUILT-IN WIRELESS LAN AND WIRED LAN SUPPORT

A wired LAN terminal has been newly added to the XF205 and XF200 for reliable Ethernet connection, while the existing wireless LAN function supports dual Wi-Fi frequency bands of 2.4 GHz and 5 GHz.



## EXPANDED NETWORK FUNCTIONS

Through wired LAN connection and wireless LAN support, users can utilize a variety of network functions, such as Browser Remote and the CameraAccess app on smart devices.

When covering news on location where there may not be broadcasting facilities, the XF205 and XF200 are capable of performing background transfer of MP4 video files to an FTP server, even while in Camera mode when recording is paused. MXF files and photo data can also be transferred to the FTP server for quick distribution or editing purposes.

## OTHER FEATURES

- Double-Slot Recording
- Relay Recording
- Face Detection Technology
- Interval Recording
- Digital Teleconverter (6x, 3x, 1.5x)
- Remote Controller RC-V100 Supported\*

\*optional accessory

## SPECIFICATIONS

		XF205	XF200
CMOS	Sensor Size	1/2.84" CMOS	
	Effective Pixels	2.91 megapixels	
Lens	Focal range	20x, 28.8 to 576mm (when the wide angle of view setting is OFF; 26.8mm when the setting is ON)	
	Aperture range	f1.8 - f16	
	Image stabilizer	Optical (Powered IS/New dynamic mode)	
	Lens ring	3 rings (Focus, iris and zoom)	
Infrared camera supported		YES (high-output infrared light)	
Wide DR gamma		YES	
LCD monitor		3.5" (equivalent to approx. 1.23 megapixels) OLED panel	
CVF		0.45" (equivalent to approx. 1.23 megapixels), tiltable	
Movie Recording	MXF recording	50Mbps : 1920 x 1080 50.00i/25.00P, 1280 x 720 50.00P/25.00P 35Mbps : 1920 x 1080 50.00i/25.00P, 1440 x 1080 50.00i, 1280 x 720 50.00P/25.00P 25Mbps : 1440 x 1080 50.00i/25.00P	
	AVCHD recording	NO	
	MP4 recording	35Mbps : 1920 x 1080 50.00P 24Mbps : 1920 x 1080 25.00P 17Mbps : 1280 x 720 50.00P 9Mbps : 1280 x 720 25.00P 3Mbps : 640 x 360 25.00P	
	Dual recording	YES (MXF + MXF, MXF + MP4)	
	Slow & Fast motion recording	YES (MXF)	
Recording media	Memory card	2 CF card slots, 1 SD card slot (for MP4 recording)	
Terminals for commercial applications	SDI terminal	YES (2 connectors: 3G/HD-SDI & HD/SD-SDI)	NO
	TC IN/OUT terminal	YES	NO
	GENLOCK/SYNC OUT terminal	YES	NO
	Ethernet LAN terminal	YES	
	INPUT terminal	YES (2 XLR terminals)	
Other terminals		HDMI, AV, headphones, USB, remote (LANC-compatible)	
Accessory battery		BP-955	
Wi-Fi		YES (5GHz/2.4GHz)	
Handle controls		YES (XLR terminal, built-in infrared light, mic holder, cold shoe, zoom lever, trigger, tally lamp)	
Works with GPS accessories		YES	
Rotating side grip		YES (120° angle of rotation in 15° increment)	
Lens hood with lens barrier		YES	
External dimensions* (W x H x D)		Approx. 160 x 201 x 353mm (6.3 x 7.9 x 13.9 in.)	
Body weight		Approx. 1700g (3.74 lb.)**	

\*Including the lens hood, grip and mic holder unit: excluding the grip strap.

\*\*Body + lens hood + grip strap. Excluding the BP-955 (220g) battery pack.

# Canon

Errors and omissions excepted. Images are simulated. Weight and dimensions are approximate. Subject to change without notice. Macintosh is a trademark of Apple Computer Inc., registered in the United States and other countries. Microsoft® and Windows® are either registered trademarks or trademarks of Microsoft Corporation in the United States and/or other countries. Wi-Fi is a trademark. Other names and products not mentioned above may be registered trademarks or trademarks of their respective companies. Canon is a registered trademark of Canon Inc.

Warning: Unauthorized recording of copyrighted materials may infringe on the rights of copyright owners and be contrary to copyright laws.

**SOUTH & SOUTHEAST ASIA REGIONAL HEADQUARTERS**  
**CANON SINGAPORE PTE. LTD.**

1 HarbourFront Avenue, #04-01 Keppel Bay Tower, Singapore 098632

www.canon-asia.com | professional\_imaging@canon.com.sg

0185W934